

SV100

~ V-By-One 16 Lane (4K2K/120Hz) Signal Generator ~



Equipment specification

Item	Detail
Operating temperature range	0 - 40 °C
Storage temperature range	0 - 60 °C
Operating humidity range	20 - 80 % RH (Non-condensing)
Input supply voltage Power frequency	AC85 - 220V 50 / 60Hz
Body Dimensions	305(W) × 221(D) × 63(H) (does not include protrusions)
Weight	about 4.5 kg
Power consumption	Max. 375W
Dot Clock Frequency	6 bit 20MHz - 100MHz 8 bit 20MHz - 100MHz 10 bit 20MHz - 85MHz
Output Signals	V-By-One 16 Lane (max.)
Output Voltage	VLCD 2.0V - 13.0V (max. 10A variable) VID 3.3V or 5V (max. 2A) AUX 12.0V (max. 2A)
Resolution	Max. 4096 × 4096

I.S.X Corporation

〒532-0033

5-8-20, Niitaka,
Yodogawa-Ku, Osaka,
Japan

TEL 06-4807-6636

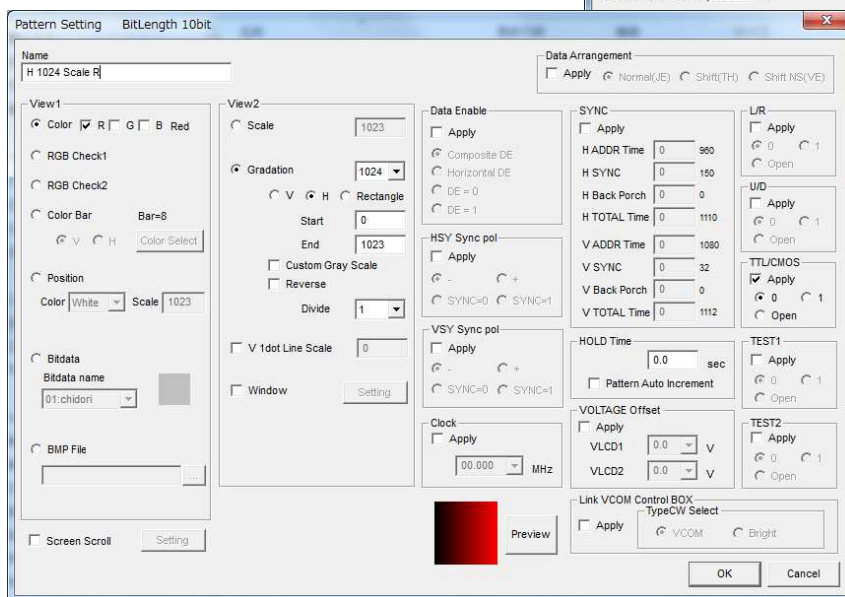
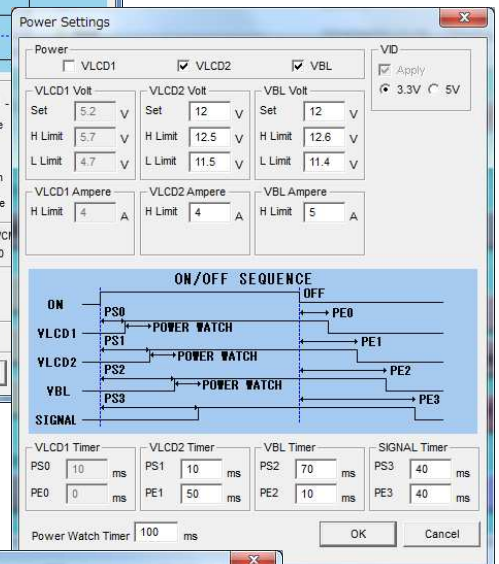
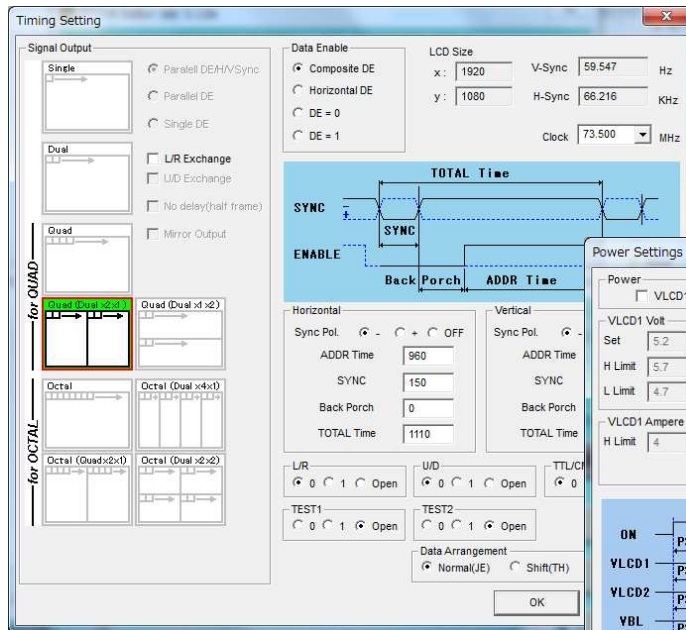
FAX 06-4807-6669

sales@isx.co.jp



SV100

~ V-By-One 16 Lane (4K2K/120Hz) Signal Generator ~



I.S.X Corporation
〒532-0033
5-8-20, Niitaka,
Yodogawa-Ku, Osaka,
Japan
TEL 06-4807-6636
FAX 06-4807-6669
sales@isx.co.jp

